

Recalling

100%	always
	usually
	frequently
	often
50%	sometimes
	occasionally
	rarely
0%	seldom
	hardly ever
	never

- We **usually** **go** to bed late.
- My mother **never** **eats** breakfast.
- My father **is** **always** punctual at work.

Banker's Wife's Clues

Where does John live?

He lives near the bank.

Where does he work?

He works at the bank.

When does he work?

**He works all day and he works all night,
at the bank, at the bank, at the great, big bank.**

Where does he study?

He studies at the bank.

Where does he sleep?

He sleeps at the bank.

**Why does he spend all day, all night,
all day, all night, at the bank, at the bank?**

**Because he loves his bank more than his wife
and he loves his money more than his life.**

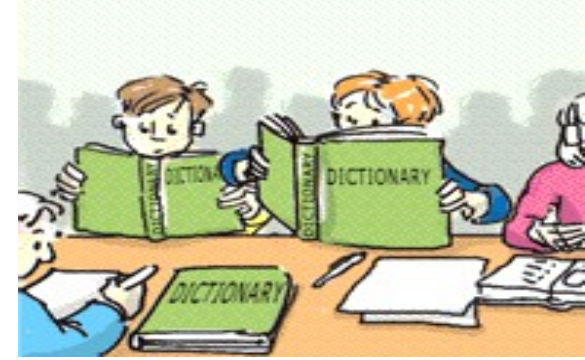


Unit 3. What a hectic week!

Topic: Getting information.



Aims:



- Express questions and answers about daily habits and routines by means of oral and written exercises and pair work to influence on the development of responsibility as a human value.

8 GRAMMAR FOCUS: Present tense questions

Do you get up early on Sundays?
What time **do you get** up?

No, **I get** up late.
At noon.

Does she eat breakfast in the morning?
What time **does she eat** breakfast?

Yes, **she eats** breakfast at work.
At nine o'clock.

Do they go to work together?
What time **do they go** to work?

Yes, **they go** together every day.
At a quarter to eight.

1 Unscramble the questions to complete the conversations.
Then practice with a partner.

A: I get up early every day.

B: ?
(you get what time up do)

A: At 6:00 A.M.

A: ?
(Julia does alone live)

B: No, she lives with her parents.

A: Sophia and Jason go to school by bus.

B: ?
(does come the bus what time)

A: It comes at eight o'clock.

A: ?
(have you every breakfast day do)

B: Yes, I have breakfast with my family.

Time expressions

every day
every morning

on Sundays
on weekdays

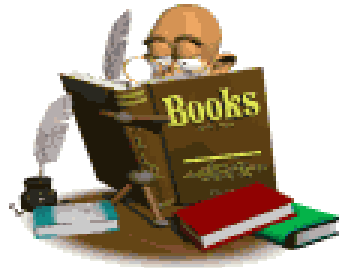
in the morning
in the afternoon

at nine o'clock

2 *Pair work* Write the answers to these questions. Then ask and answer the questions with a partner.

- a) What time do you get up?
- b) Do you have breakfast every day?
- c) Do you read the newspaper in the morning or in the evening?
- d) What time do you leave for work?
- e) How do you go to work? Do you drive? Do you take the bus?
- f) What time do you have lunch? Do you go to a restaurant?
- g) Do you take a break in the afternoon?
- h) What time do you go home?
- i) Do you have dinner with your family?
- j) Do you watch television in the evening?
- k) Do you read in the evening?

Exercise 11. Page 27. Text book.



1. Work in pairs. Fill the chart asking and answering questions about your daily activities. Ask and answer according to your agenda.

e.g.

-When do you have
Morphology lecture?

-At 7:30 on Monday.

-What do you do on Monday
morning?

-I have Morphology lecture at
7:30 and at 11:20 I have
English class.

Day	Activity	Time
Monday		
Tuesday		
Wednesday		
Thursday		
Friday		
Saturday		
Sunday		

Homework:

- Exercise 18. Page 29. Text book.

